

## Sertifikaadi uuendamise juhis

24.11.2020

Ravimite Ehtsuse Kontrolli SA

Iga 2 aasta tagant aeguvad EtMVS süsteemi sertifikaadid turvalisuse kaalutlusel. Kasutaja jaoks koostab süsteem automaatselt uue sertifikaadi ning edastab selle vastava kasutajakonto e-posti aadressile 60 päeva enne sertifikaadi aegumist. Kasutaja saab järgmise 60 päeva jooksul iga päev meeldetuletuse, kuni ta on konto sertifikaadi uuendanud. Kui sertifikaadi uuendamise aeg läheb mööda, ei saa kasutaja enam EtMVS süsteemi ligipääsu.

Sertifikaadi uuendamisel palun järgige juhendis toodud saame. Antud juhend on koostatud PC kohta ning MAC süsteemi kasutajad peavad lähtuma enda süsteemi eripäradest (nt palub süsteem teatud hetkel kasutaja parooli, mille osas on mõeldud mitte EtMVS vaid MAC süsteemi parooli). Antud juhend kajastab PROD ehk tootmiskeskonda kuid üldjoontes on protsess samasugune ka IQE ehk testkeskkonna puhul (kõikidel kasutajatel ei ole testkeskkonna kontosid kunagi loodudki).

1. Esmalt saab kasutaja automaatse e-kirja aadressilt [nmvs-prod-ee-messages@arvato-systems.de](mailto:nmvs-prod-ee-messages@arvato-systems.de) pealkirjaga:

**[NMVS-EE PROD System] NMVS reminder: your certificate will expire in 60 days**

*Dear NMVS user,*

*Your certificate for the National Medicines Verification System will expire in 60 days. When your user certificate expires, you will no longer be able to connect to the system. Therefore, the system has provided you with a new certificate.*

*Please enter the given TAN (see below) and download your new certificate at the following address: [https://portal-pki-prod-ee.nmvs.eu/NMVS\\_PORTAL\\_PKI](https://portal-pki-prod-ee.nmvs.eu/NMVS_PORTAL_PKI)*

- *Business process:* G617
- *User name (Login):* XXXXX/ADMIN
- *Tan:* XxxXxxxX
- *Expiry date:* (süü kuvatakse uue sertifikaadi kehtivus)

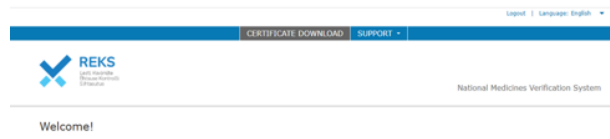
*If you want to remain the access to the NMVS Web Portal, please integrate the new certificate in your browser using the passphrase you will receive after downloading the certificate.*

2. Lingile vajutades tuleb sisse logida portaali ning alusada sertifikaadi uuendamise/laadimise protsess. NB! On väga oluline, et kasutaksite sisselogimiseks **seda arvutit, kuhu on installeeritud ka eelmine sertifikaat** EtMVS kasutamiseks. **Teisel juhul ei lase süsteem teid portaali sisse.**

PRODUCTION ENVIRONMENT (PROD)

User name	
Password	

Reset password Login



3. Kasutage laadimiseks e-kirjas toodud TAN koodi ja vajutage **Download certificate**

### Download certificate

Please enter the certificate **TAN** sent to you:

Download certificate

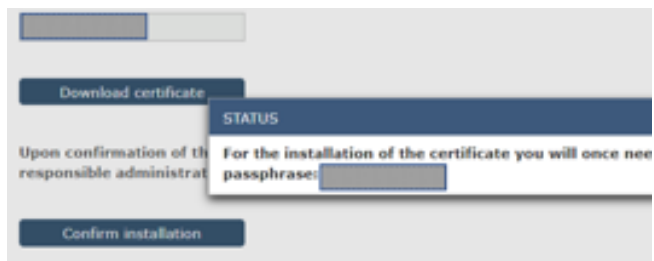
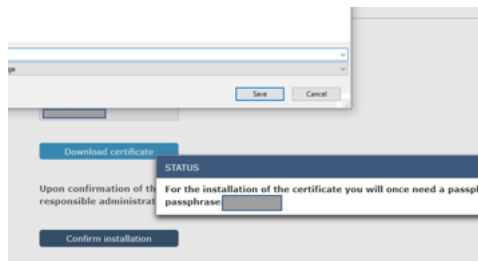
Your certificate for the National Medicines Verification System will expire in 60 days. When your user certificate expires, you will no longer be able to connect to the system. Therefore, the system has provided you with a new certificate. Please enter the given TAN (see below) and download your new certificate at the following address: [https://portal-pki-prod.ec.europa.eu/NMVS\\_PORTAL\\_PKI](https://portal-pki-prod.ec.europa.eu/NMVS_PORTAL_PKI)

- Business process: G617
- User name (Login): XXX
- **Tan: XXX**
- Expiry date: XXX

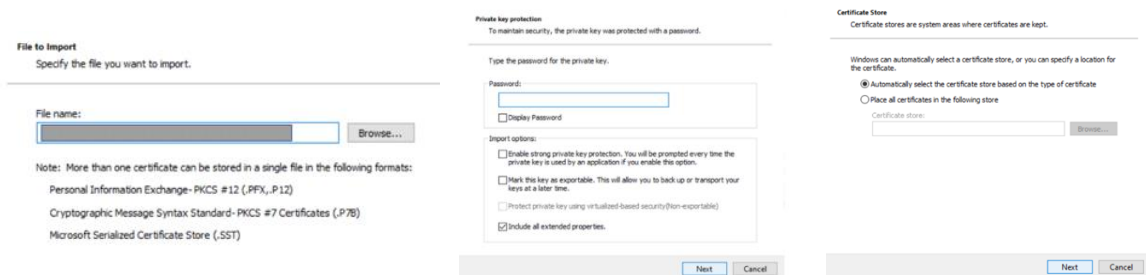
If you want to remain the access to the NMVS Web Portal, please integrate the new certificate in your browser using the passphrase you will receive after downloading the certificate.

This mail was generated automatically by the National Medicines Verification System. Please do not reply to this mail. If you have any questions, please contact our support at the contact address below.

4. Sertifikaat tuleb alla laadida ning salvestada arvutisse. **Palun märkige üles ajutine parool, seda on vaja ka juhul kui soovite hiljem sertifikaati avada.** NB juhime tähelepanu, et vaataksite üle kuhu kausta te sertifikaadi salvestate, et vajadusel see uuesti avada ja/või kopeerida kui vahetate näiteks arvutit või installeerite uuest operatsioonisüsteemi (Windows).



5. Sertifikaadi importimine ja avamine ajutise parooliga



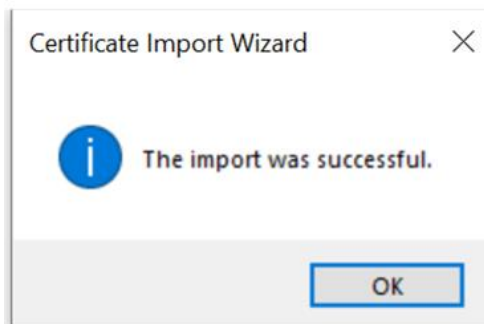
6. Laadimise lõpetamine. Palun vajutage peale salvestamist Finish ja siis kindlasti **Confirm Installation**

#### Completing the Certificate Import Wizard

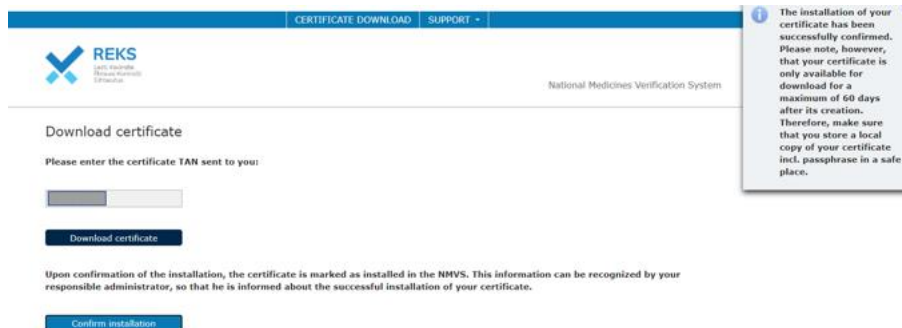
The certificate will be imported after you click Finish.

You have specified the following settings:

<b>Certificate Store Selected</b>	Automatically determined by the wizard
Content	PKIX
File Name	<input type="text"/>



Järgmiseks suunatakse Teid tagasi algele lehele, kus kuvatakse ka installeerimise protsessi õnnestumise teavitust



**REKS**  
Eesti Ravimite  
Ehtsuse Kontrolli  
Sihtasutus

National Medicines Verification System

CERTIFICATE DOWNLOAD | SUPPORT -

### Download certificate

Please enter the certificate TAN sent to you:

Upon confirmation of the installation, the certificate is marked as installed in the NMVS. This information can be recognized by your responsible administrator, so that he is informed about the successful installation of your certificate.

**i** The installation of your certificate has been successfully confirmed. Please note, however, that your certificate is only available for download for a maximum of 60 days after its creation. Therefore, make sure that you store a local copy of your certificate incl. passphrase in a safe place.

Süsteemi kasutamiseks tuleb minna lingile (**NB!** see erinev sertifikaadi laadimise aadressist):  
[https://portal-prod-ee.nmvs.eu/NMVS\\_PORTAL](https://portal-prod-ee.nmvs.eu/NMVS_PORTAL)